

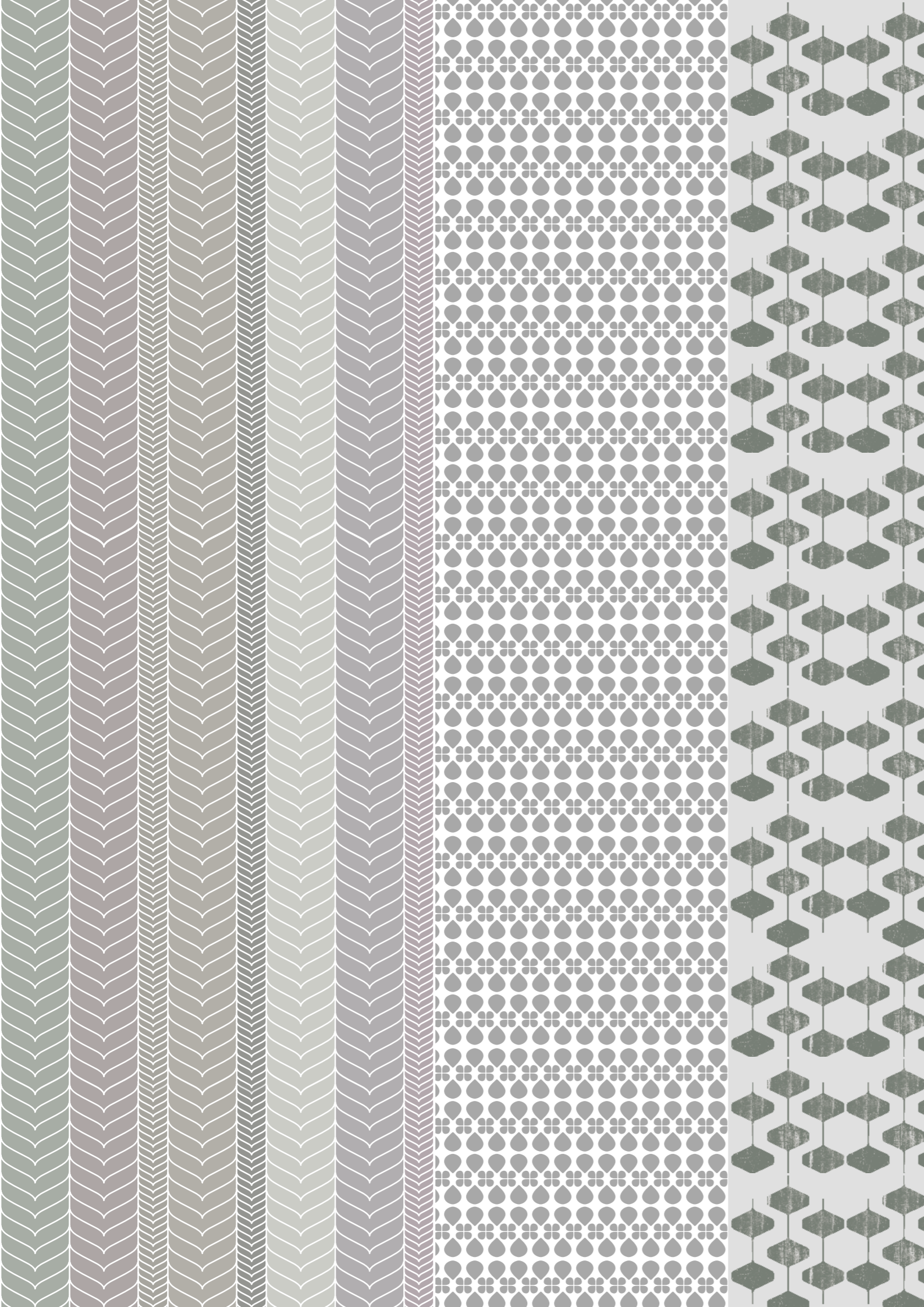
# MASH

UF

UN'ARTE  
COMBINATA DI  
SEGNI E COLORI



AN ARTISTIC  
COMBINATION OF  
PATTERNS AND  
COLOURS



# Ma UP SH

02 LINE

06 WAVE

14 JUNGLE

18 CHICK

04 BRICK

08 UD 2

10 UD MIX

16 MURALES

LINEE DAI TONI  
CALDI RIVESTONO  
LO SPAZIO CON  
PERSONALITÀ



LINES WARM TONES PLAY  
SPACE WITH PERSONALITY

MASH-UP 36W

MASH-LINE 36W



PERFECT  
MIX & MATCH

MASH-BRICK 36W  
MASH-BRICK 1 36

UN MIX AND  
MATCH  
PERFETTO

MASH-UP 36A MASH-WAVE 36A B.MASH-UP

MASH-UP



## ELEMENTI VIBRANTI AD EFFETTO ONDA



VIBRANT ELEMENTS WITH  
WAVE EFFECTS

MASH-UP

# FORME GEOMETRICHE CHE SI RIPETONO RITMICAMENTE SULLA SUPERFICIE



GEOMETRICAL SHAPES THAT  
ARE REPEATED RHYTHMICALLY  
ON THE SURFACE



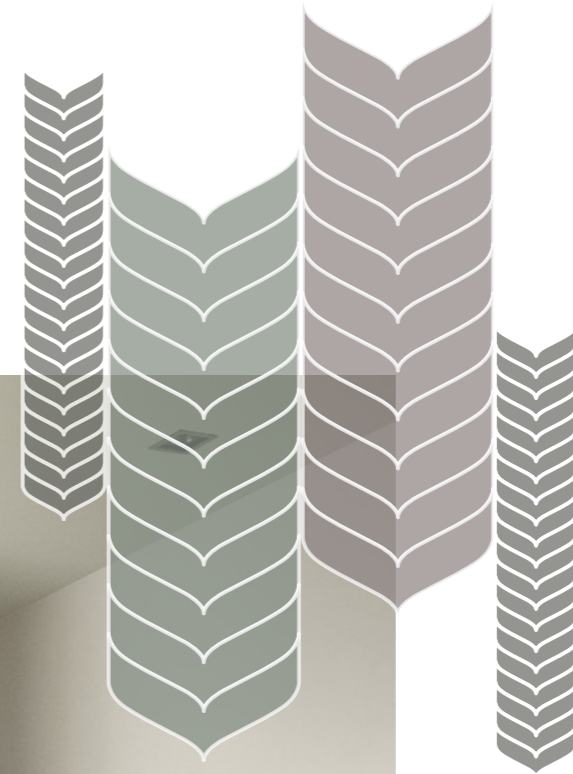
MASH-UP 36W MASH-UP 2 36

MASH-UP

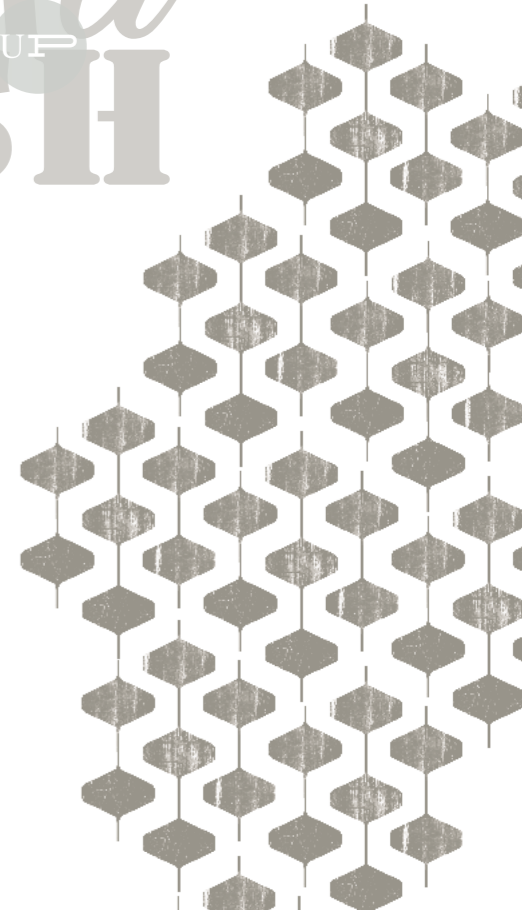
MASH-UP 36A

MASH-UP 4 36

MASH-UP 5 36



**MASH**



**LA FANTASIA  
TROVA IL SUO  
GIUSTO CORSO**

SOLUZIONE COMPOSITIVA DI  
LIBERA INTERPRETAZIONE

MASH-UP 36A MASH-UP 4 36 MASH-UP 5 36 MASH-UP 2 36 MASH-UP 1 36 MASH-UP 3 36



AN ORIGINAL COMPOSITION  
THAT CAN BE FREELY  
INTERPRETED



JUNGLE 2

MASH-UP 36W



# UN CRESCENDO DI EMOZIONI E DI ORIGINALITÀ

LAYOUTS AND ACHIEVE  
EXCITING AND ORIGINAL  
FINISHES



MASH-UP

**MURALES  
E GRAFFITI  
LA STREET  
ART DIVENTA  
ARREDO  
DOMESTICO**

MURALS AND GRAFFITI:  
STREET ART BECOME  
HOME DECOR



COME UN  
FOGLIO BIANCO CHE  
CON ESTRO E  
FANTASIA SI RIEMPIE  
DI FORME E COLORI

LIKE A WHITE SHEET OF PAPER  
THAT, WITH CREATIVITY AND  
IMAGINATION, IS FILLED WITH  
SHAPES AND COLOURS

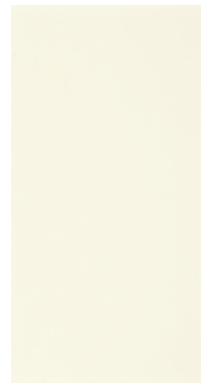
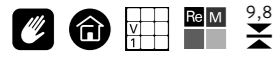
MASH  
UP  
SH

MASH-BRICK 36W  
CHICK RED 2  
CHICK YELLOW 2



# MASH-UP

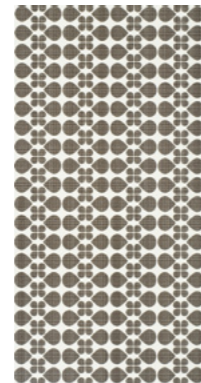
BICOTTURA DA RIVESTIMENTO / DOUBLE-FIRED WALL TILE



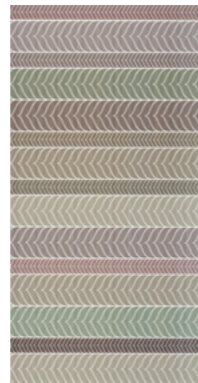
**MASH-UP 36A**  
30X60-12"X24"



**MASH-LINE 36A**  
30X60-12"X24"



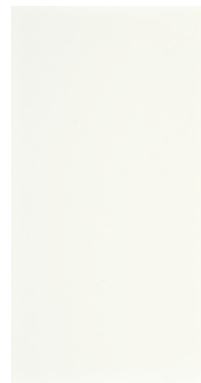
**MASH-UP 2 36**  
30X60-12"X24"



**MASH-UP 5 36**  
30X60-12"X24"



**MASH-UP 3 36**  
30X60-12"X24"



**MASH-UP 36W**  
30X60-12"X24"



**MASH-LINE 36W**  
30X60-12"X24"



**MASH-UP 1 36**  
30X60-12"X24"



**MASH-UP 4 36**  
30X60-12"X24"

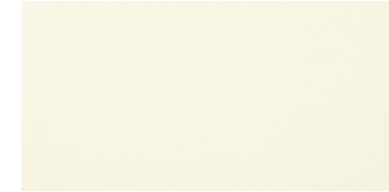
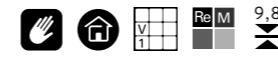


**B.MASH-UP**  
0,5X60-2.2"X24"



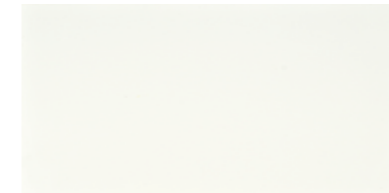
**JUNGLE 2**  
30X60-12"X24"

BICOTTURA DA RIVESTIMENTO / DOUBLE-FIRED WALL TILE



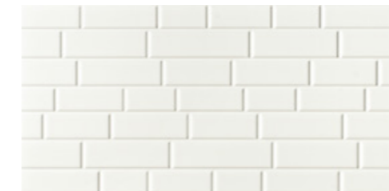
**MASH-UP 36A**  
30X60-12"X24"

**B.MASH-UP 60A**  
2X60-0.8"X24"



**MASH-UP 36W**  
30X60-12"X24"

**B.MASH-UP 60W**  
2X60-0.8"X24"



**MASH-BRICK 36W**  
30X60-12"X24"



**MASH-BRICK 1 36**  
30X60-12"X24"



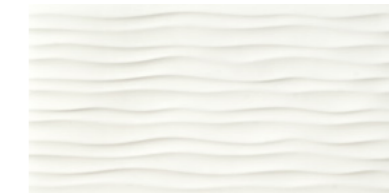
**MASH-BRICK 5 36**  
30X60-12"X24"



**MASH-BRICKMIX 36**  
30X60-12"X24"



**MASH-WAVE 36A**  
30X60-12"X24"



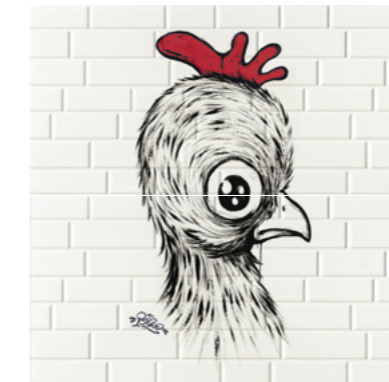
**MASH-WAVE 36W**  
30X60-12"X24"



**MASH-WAVE 1 36A**  
30X60-12"X24"



**MASH-WAVE 1 36W**  
30X60-12"X24"



**CHICK RED 2**  
30X60-12"X24"



**CHICK YELLOW 2**  
30X60-12"X24"



**MURALES MIX**  
30X60-12"X24"



# SimB@ LOGia

SYMBOLS

## INDICAZIONI D'USO INDICATIONS FOR USE

 **RIVESTIMENTO**  
WALL TILES

## STRUTTURA STRUCTURE

 **LISCIO**  
SMOOTH

## DESTINAZIONI D'USO SUGGESTED APPLICATIONS

 **ABITAZIONI**  
DOMESTIC PURPOSE


## STONALIZZAZIONE SHADE VARIATION

 V1

## FINITURA FINISH

 **NATURALE**  
NATURAL

## ASPETTO SUPERFICIALE SURFACE LOOK

 **OPACO**  
MATT

## BORDO EDGE

 **RETIFICATO MONOCALIBRO**  
MONOCALIBER, RECTIFIED

# CERTIFICAZIONI

## CERTIFICATIONS

LA NATURA E LA TECNOLOGIA SI FONDONO PER DAR VITA A UN NUOVO CONCETTO DI CERAMICA CHE METTE AL CENTRO IL RAPPORTO TRA L'UOMO E L'AMBIENTE; UN BINOMIO INSCINDIBILE PER IL CONSEGUIMENTO CONSAPEVOLE DEI PRINCIPI DI ECO-EFFICIENZA AZIENDALE ED ECO-COMPATIBILITÀ AMBIENTALE SIGILLATO DA IMPORTANTI RICONOSCIMENTI.

NATURE AND TECHNOLOGY COMBINE TO GIVE BIRTH TO A NEW CONCEPT IN CERAMIC TILES WHICH PLACES THE RELATIONSHIP BETWEEN MAN AND THE ENVIRONMENT AT THE CENTRE; AN INSEPARABLE COMBINATION FOR THE CONSCIOUS ACHIEVEMENT OF ECO-EFFICIENT CORPORATE PRINCIPLES AS WELL AS THOSE OF ENVIRONMENTAL ECO-COMPATIBILITY, SEALED WITH IMPORTANT RECOGNITIONS.

## ISO 14001

IL SISTEMA DI GESTIONE AMBIENTALE DI COOPERATIVA CERAMICA D'IMOLA - IN RIFERIMENTO ALLA NORMA UNI EN ISO 14001 - È STATO IMPOSTATO PERSEGUENDO I SEGUENTI PRINCIPI:

THE ENVIRONMENTAL MANAGEMENT SYSTEM OF COOPERATIVA CERAMICA D'IMOLA - IN REFERENCE TO THE UNI EN ISO 14001 NORMATIVE - WAS IMPOSED ON THE BASIS OF THE FOLLOWING PRINCIPLES:

- SALVAGUARDIA DELL'AMBIENTE E DELLE RISORSE NATURALI.
- POLITICA ENERGETICA EFFICACE ED EFFICIENTE.
- RISPETTO PER L'ECOSISTEMA.

- PROTECTION OF THE ENVIRONMENT AND OF NATURAL RESOURCES.
- EFFICIENT AND EFFECTIVE ENERGY POLICY.
- RESPECT FOR THE ECOSYSTEM.



## ISO 9001

COOPERATIVA CERAMICA D'IMOLA HA OTTENUTO LA CERTIFICAZIONE DEL SISTEMA DI QUALITÀ IN RIFERIMENTO ALLA NORMA UNI EN ISO 9001, PER LA PROGETTAZIONE, PRODUZIONE E VENDITA DI PIASTRELLE CERAMICHE IN TUTTE LE TIPOLOGIE PRODUTTIVE.

COOPERATIVA CERAMICA D'IMOLA HAS OBTAINED THE QUALITY SYSTEM CERTIFICATION, IN RELATION TO THE UNI EN ISO 9001 NORMATIVE, FOR THE DESIGN, PRODUCTION AND MARKETING OF CERAMIC TILES FOR ALL OF THE PRODUCTION TYPES.

L'IMPLEMENTAZIONE DI TALE SISTEMA HA I SEGUENTI OBIETTIVI:

IMPLEMENTATION OF THIS SYSTEM - IN RELATION TO THE UNI EN ISO 9001 NORMATIVE - HAS THE FOLLOWING OBJECTIVES:

- PERSEGUIRE, ATTRAVERSO UN'ADEGUATA GESTIONE DELLE RISORSE TECNICHE E IMPIANTISTICHE, IL CONTINUO MIGLIORAMENTO DEI PROCESSI PRODUTTIVI;
- GARANTIRE IL CORRETTO IMPIEGO, L'EFFICIENZA, L'ATTENDIBILITÀ ED AFFIDABILITÀ DEI RISULTATI DI MISURE E PROVE, ATTRAVERSO LA PIANIFICAZIONE DELLA MANUTENZIONE ED IL CONTROLLO DI IMPIANTI, APPARECCHIATURE E STRUMENTAZIONI;
- CONTRIBUIRE AL MIGLIORAMENTO DEL CONTESTO SOCIALE DI CUI È PARTE, NEL RISPETTO DELLE PERSONE E DELL'AMBIENTE IN CUI È INTEGRATA.

- ACHIEVEMENT, THROUGH ADEQUATE MANAGEMENT OF THE TECHNICAL AND SYSTEM RESOURCES, OF THE ONGOING IMPROVEMENT OF THE PRODUCTION PROCESSES.
- GUARANTEE THE CORRECT USE, EFFICIENCY, RELIABILITY AND DEPENDABILITY OF THE RESULTS OF THE MEASUREMENTS AND TESTS THROUGH THE PLANNING OF THE MAINTENANCE AND THE CONTROL OF THE SYSTEMS, EQUIPMENT AND INSTRUMENTATION.
- CONTRIBUTE TO THE IMPROVEMENT OF THE SOCIAL CONTEXT OF WHICH IT IS PART AND IN TERMS OF THE PEOPLE AND THE ENVIRONMENT INTO WHICH IT IS INTEGRATED.



## EMAS

COOPERATIVA CERAMICA D'IMOLA, ATTUANDO UNA PRECISA POLITICA AZIENDALE DI SVILUPPO SOSTENIBILE, HA OTTENUTO LA REGISTRAZIONE ECO-MANAGEMENT AND AUDIT SCHEME (EMAS), UN IMPORTANTE RICONOSCIMENTO A LIVELLO EUROPEO, RELATIVO AI SITI PRODUTTIVI, VOLTO AL CONTINUO MIGLIORAMENTO DEGLI STANDARD PRODUTTIVI E ALLA SENSIBILIZZAZIONE DI TUTTO IL PERSONALE SOTTO IL PROFILO DELLA SALVAGUARDIA AMBIENTALE.

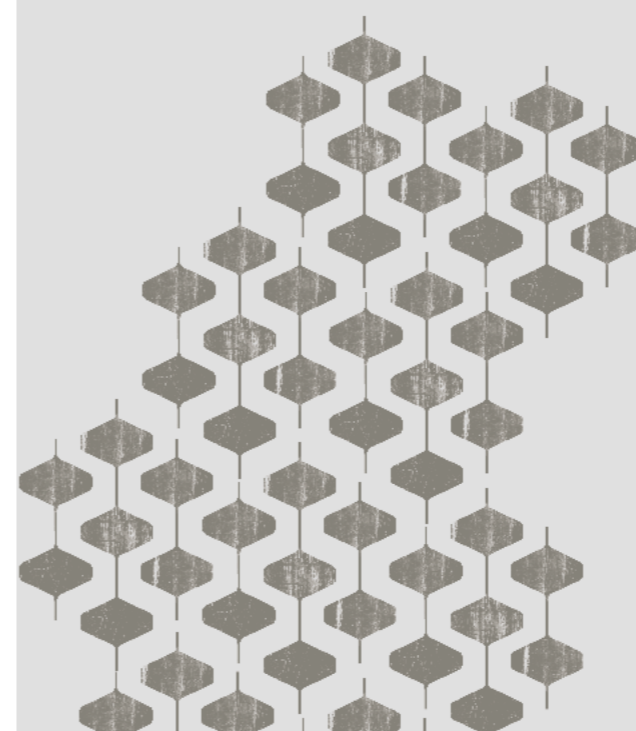
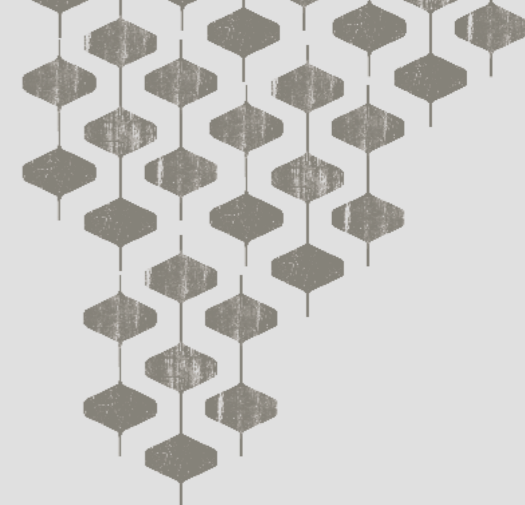
THROUGH THE IMPLEMENTATION OF A PRECISE COMPANY POLICY ON SUSTAINABLE DEVELOPMENT, COOPERATIVA CERAMICA D'IMOLA HAS OBTAINED ECO-MANAGEMENT AND AUDIT SCHEME (EMAS) REGISTRATION. THIS IS AN IMPORTANT RECOGNITION ON A EUROPEAN LEVEL THAT AIM AT THE CONTINUOUS IMPROVEMENT OF PRODUCTION STANDARDS AND AWARENESS OF ALL OF ITS EMPLOYEES IN TERMS OF PROTECTING THE ENVIRONMENT. THE EMAS SYSTEM IS A VOLUNTARY AWARENESS FOR THOSE COMPANIES COMMITTED TO EVALUATING AND IMPROVING THEIR ENVIRONMENTAL EFFICIENCY THROUGH A MORE RESPONSIBLE CHOICE OF BUYING AND MANAGEMENT, A MORE CAREFUL USE OF AIR, WATER, TERRITORY, RAW MATERIALS AND ENERGY.



## LEED

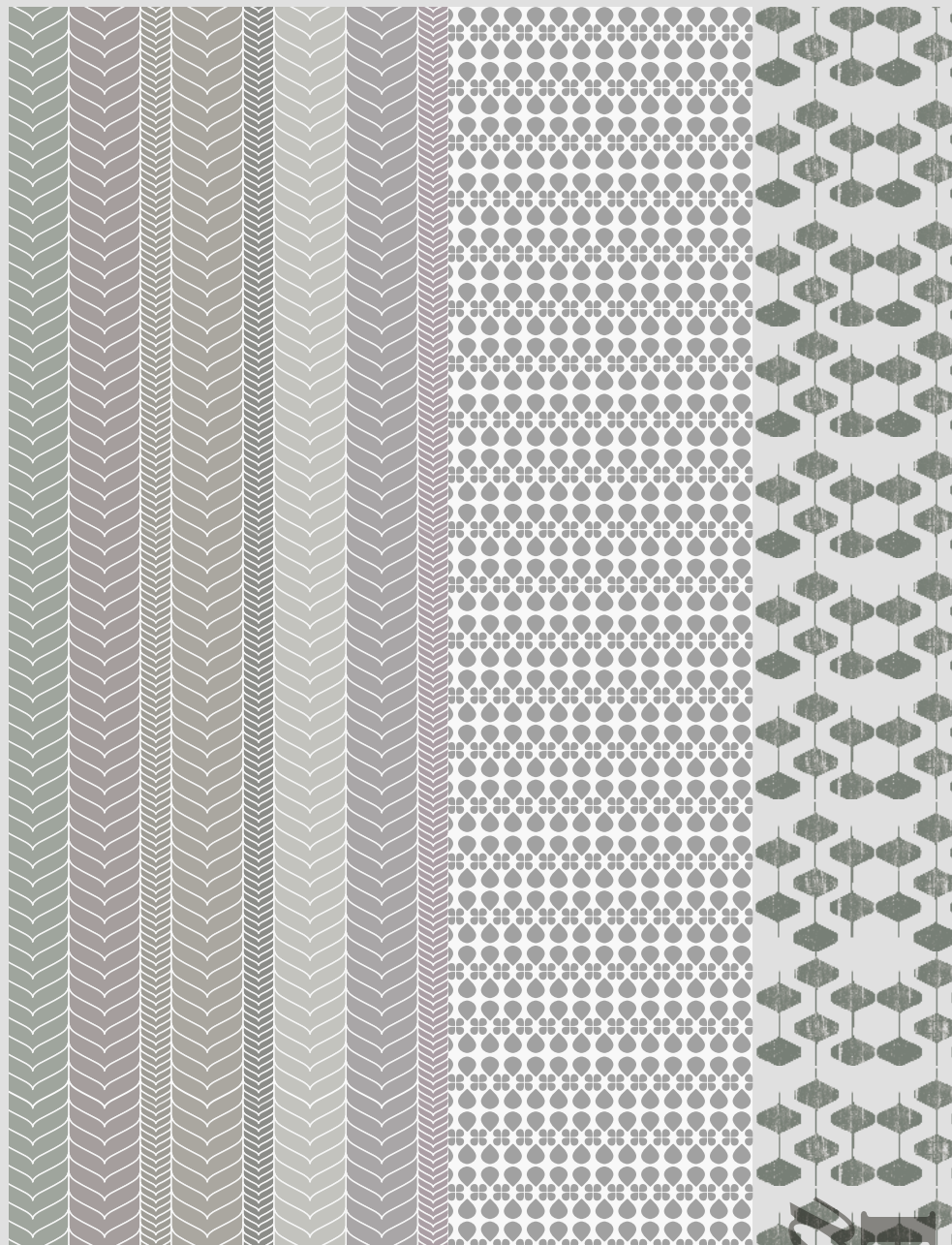
COOPERATIVA CERAMICA D'IMOLA È MEMBRO DEL GREEN BUILDING COUNCIL ITALIA, CHE OPERA PER LA DIFFUSIONE DEI CRITERI DEL MARCHIO LEED. LE PIASTRELLE, IN RELAZIONE ALLE CARATTERISTICHE E AL PROCESSO PRODUTTIVO CON CUI SONO REALIZZATE, POSSONO CONTRIBUIRE AD OTTENERE CREDITI L.E.E.D (LEADERSHIP IN ENERGY AND ENVIRONMENTAL DESIGN). IL LEED È UN SISTEMA DI CERTIFICAZIONE ENERGETICO - AMBIENTALE DEGLI EDIFICI CHE PREVEDE L'ATTRIBUZIONE DI UN PUNTEGGIO, ASSEGNATO IN FUNZIONE DELLA COMPROVATA CONFORMITÀ RISPETTO AD ALCUNI "CREDITI" PRESTABILITI. TALE CONTRIBUTO VA VALUTATO NEL TOTALE DEI MATERIALI UTILIZZATI NELL'EDIFICIO.

COOPERATIVA CERAMICA D'IMOLA IS A MEMBER OF THE GREEN BUILDING COUNCIL ITALIA, WHICH OPERATES FOR THE DIFFUSION OF THE LEED ACCREDITATION SYSTEM. IN RELATION TO THE CHARACTERISTICS AND PRODUCTION PROCESS IN WHICH THEY ARE MANUFACTURED, TILES CAN CONTRIBUTE TO OBTAINING L.E.E.D (LEADERSHIP IN ENERGY AND ENVIRONMENTAL DESIGN) CREDITS. LEED IS AN ENERGY-ENVIRONMENTAL ACCREDITATION SYSTEM FOR BUILDINGS AND IS CHARACTERISED BY A POINTS SYSTEM ATTRIBUTED ACCORDING TO THE VERIFIED CONFORMITY OF SEVERAL PRE-ESTABLISHED "CREDITS". THIS CONTRIBUTION IS EVALUATED OVER THE TOTAL OF MATERIALS USED IN THE BUILDING.





IMOLACERAMICA.IT



MSI  
UP

---

A brand of  
**Cooperativa Ceramica d'Imola S.c.**

Via V. Veneto, 13  
40026 Imola (BO) Italia  
Tel. +39 0542 601601  
Fax +39 0542 31749

---